



GRINDER MANHOLES

Project Name:

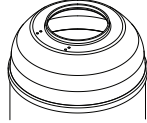
Location:

Sales Rep:

Tag #:

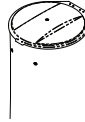
Contact Info:

Cone Top
For H-20 Loading

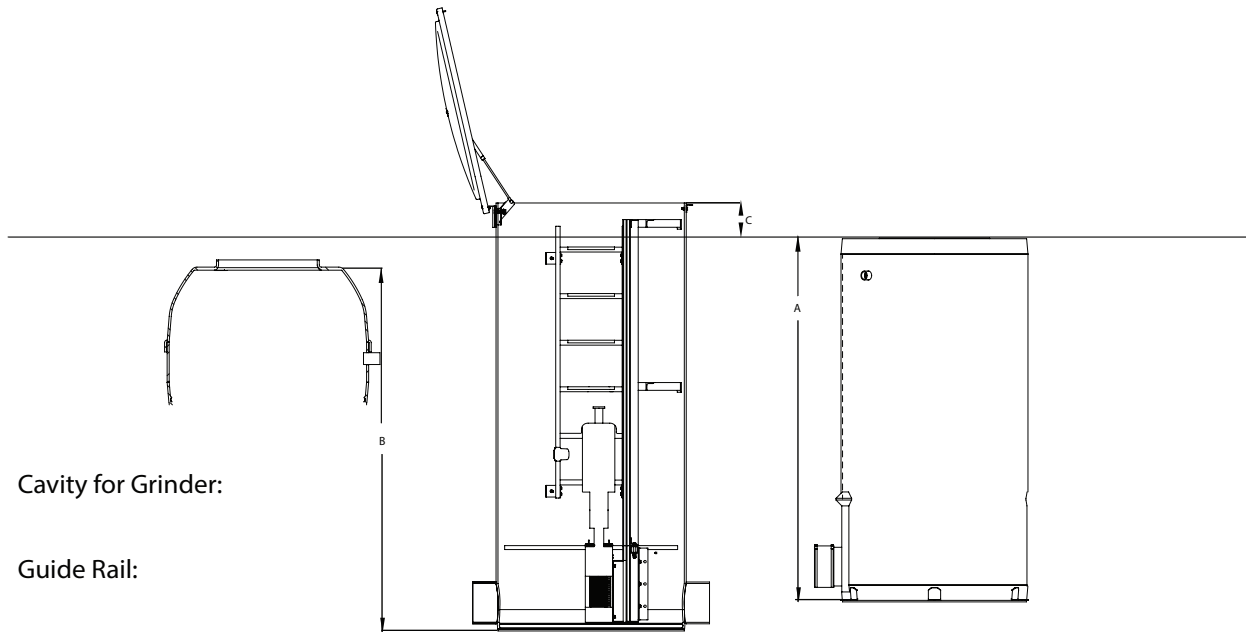
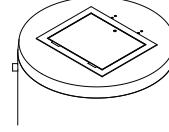


* Cast Iron Cover & Grade
Ring By Other

Hinged Lid
Above Grade



Rectangular
Aluminum
Hatches



Cavity for Grinder:

Guide Rail:

Barrel Diameter:

Diameter of inlet & Outlet Pipe:

2" Power Tap:

2" Power Tap Quantity:

Manhole Quantity:

A - Invert to Grade:

B - Invert to Top of Cone:

C - Top above Grade:

Chemicals in Flow:

Notes: